


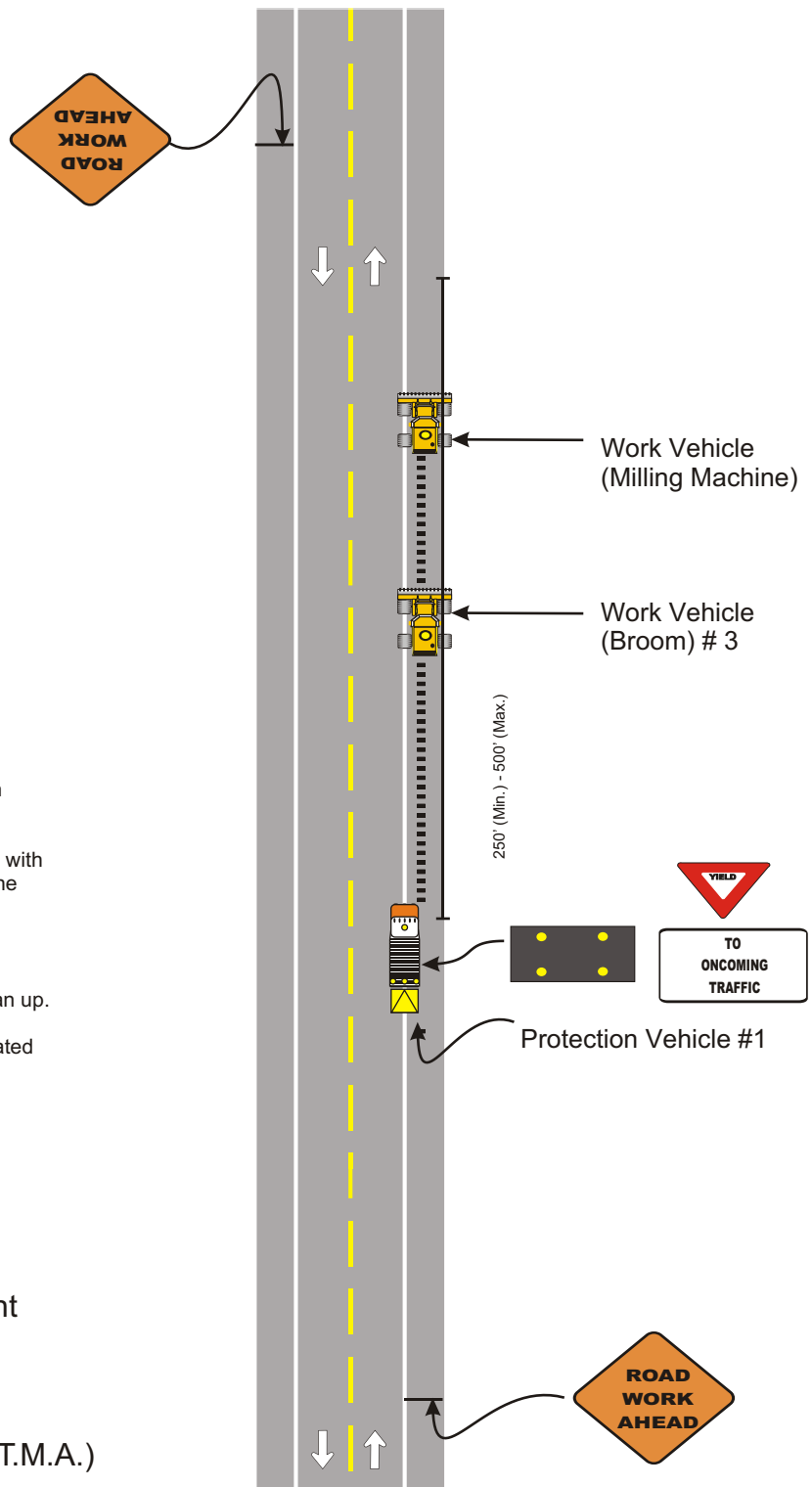


**Notes:**

1. This drawing is based on M.U.T.C.D. Standards, Millennium Edition, part VI, figure 6H-17 depicting a mobile operation on a two-lane road.
2. Vehicle-mounted signs shall be mounted with the bottom of the sign at a minimum height of 1,200 mm (48 in) above the pavement. Sign legends shall be covered or turned from view when work is not in progress.
3. Shadow and work vehicles shall display rotating lights or strobe lights.
4. Where practical and when needed, the work and shadow vehicles should pull over periodically to allow motor vehicle traffic to pass.
5. Whenever adequate stopping sight distance exists to the rear, the shadow vehicle should maintain the minimum distance from the work vehicle and proceed at the same speed. The shadow vehicle should slow down in advance of vertical or horizontal curves that restrict sight distance.
6. A truck-mounted attenuator should be used on the shadow vehicle.
7. The shadow vehicles should also be equipped with two high-intensity flashing lights mounted on the rear, adjacent to the sign.
8. Traffic control setup may be required in all operations including but not limited to installation of rumble strips, brooming and clean up.
9. Road Work Ahead signs to be periodically located to within 3 miles of the work area.

**KEY:**

- Approved vehicle safety light
-  Arrow panel
-  Truck mounted attenuator (T.M.A.)
-  Direction of travel



MOBILE OPERATION ON TWO LANE TWO WAY ROAD