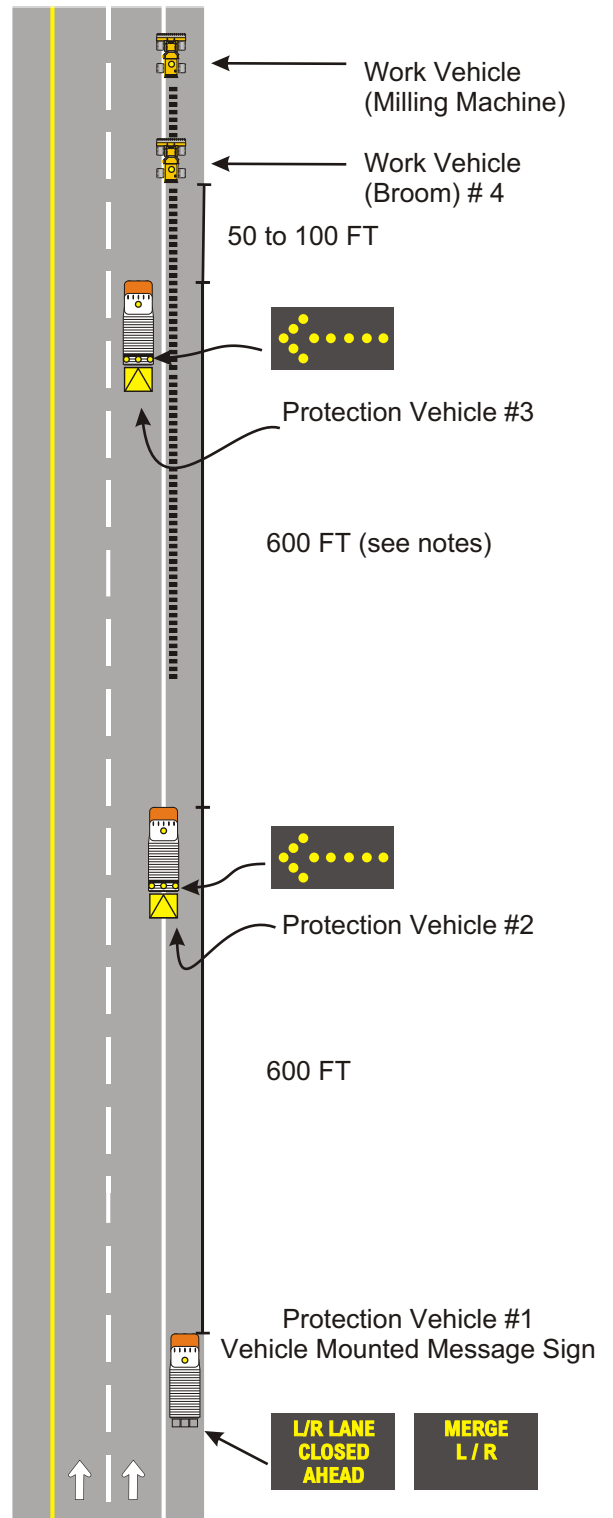


Notes:

1. This drawing is based on M.U.T.C.D. Standards, part VI, Figure TA-35 depicting a mobile operation on a multi-lane road.
2. Protection vehicle number 2 shall be placed in advance of horizontal or vertical curves to provide advance warning for work operations hidden by curves.
3. In urban areas the distance maintained between vehicle may be increased or decreased as needed to provide adequate sight distance for traffic approaching from the rear.
4. Vehicles and equipment used should be made highly visible with appropriate equipment such as flashing lights, rotating beacons, flags, signs, or arrow displays.
5. Protection vehicle #1 shall have a vehicle mounted V.M.S.
6. Protection vehicle 2 and 3 shall have arrow displays, and truck mounted attenuators.
7. Detail may be used for left or right shoulder work.
8. When adequate shoulder width is not available, vehicle #1 may be placed on the opposite shoulder.

KEY:

- Approved vehicle safety light
- ▭ Variable message sign (V.M.S.)
- ↔ Arrow panel
- ▣ Truck mounted attenuator (T.M.A.)
- ↑ Direction of travel



MOBILE OPERATION ON MULTILANE ROAD