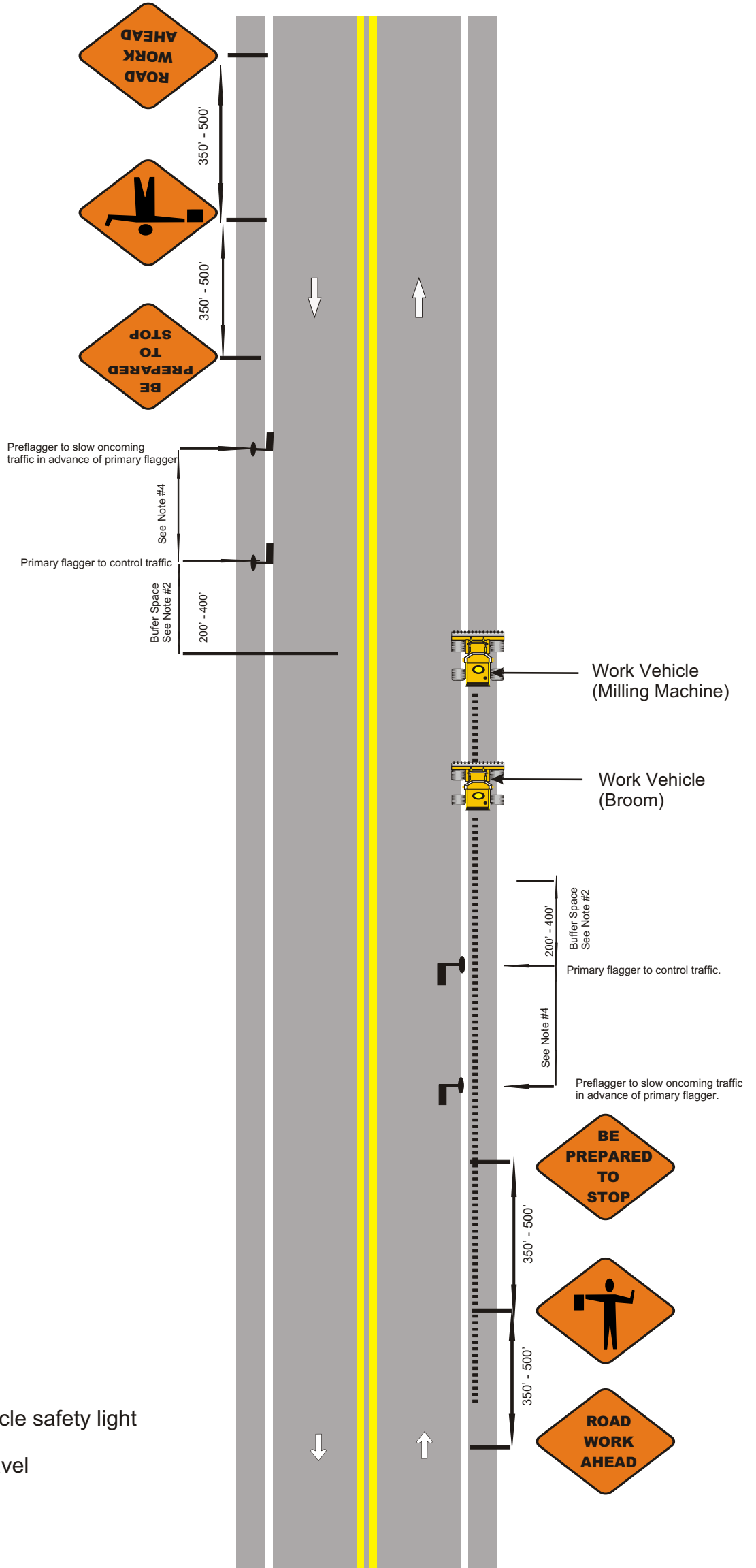


NOTES:

1. This drawing is based on M.U.T.C.D. Standard, part VI, Figure 6H-13.
2. Preflagers shall continuously move with the pace of the rumble strip operation and will alert/slow traffic in advance of the primary flaggers.
3. Primary flaggers shall alternate the stopping and starting of traffic. While one primary flagger stops traffic the other will move to maintain a 200'-400' distance from the operation.
4. Advance signs will be routinely relocated to maintain approximately 3 miles between setups.
5. The distance between these two flaggers shall vary with road terrain and available sight distance.
6. Primary flaggers should possess radios to facilitate communication.
7. Additional flag people may be used through intersections and next to the machinery as required.



KEY:

- Approved vehicle safety light
- ↑ Direction of travel

TWO LANE TWO WAY TRAFFIC CONTROL UTILIZING A MOVING FLAGGING OPERATION - SHOULDER OR EDGELINE RUMBLE STRIP CUTTING