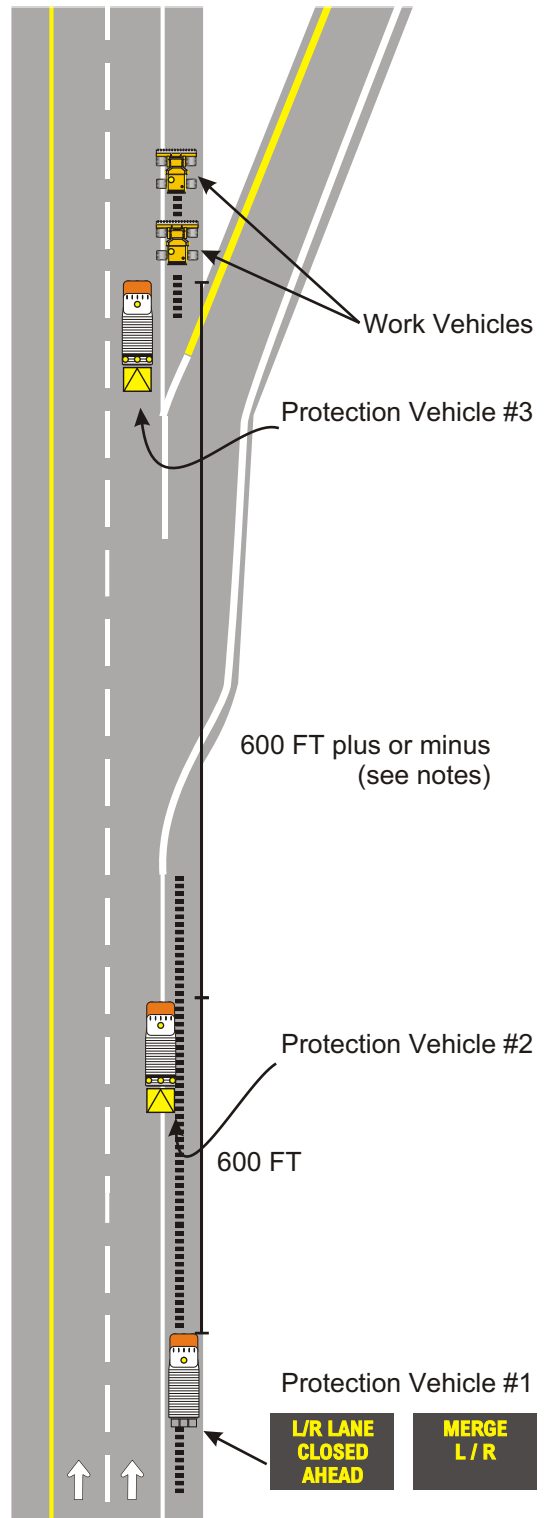


Notes:

1. All of the general notes of drawing #1 apply to drawing #2
2. The distance between protection vehicle #2 and protection vehicle #3 may be varied to allow adequate room for traffic to exit/enter to/from the ramp.



KEY:

- Approved vehicle safety light
- ▭ Variable message sign (V.M.S.)
- ↔ Arrow panel
- ▣ Truck mounted attenuator (T.M.A.)
- ↑ Direction of travel

MOBILE OPERATION ON MULTILANE ROAD